



**bornefeldt**  
Hundigevej 79 2670 Greve  
Tlf: 39272811 – Fax: 39276027



We have the pleasure to quote you as follows:

**1 – Second-Hand renovated Lockformer VULCAN2100C 1500 x 3000 mm  
Cutting Plasma System with a HYPER THERM Plasma unit Powermax unit 900  
Standard computer with VSII Vulcan software ver.5,9**

**Standard Equipment:**

- \* Industrial grade keyboard
- \* Manual speed increase/decrease override
- \* Kerf compensation from 0.025 to 25 mm
- \* 24 pre-programmed shapes
- \* Scale up/down
- \* Part rotation
- \* Shape repeat
- \* RS232C IO port optically isolated
- \* Auto home sense to set 0/0 automatically
- \* 2nd home set for piece work
- \* Acceleration control
- \* Automatic corner slow down
- \* Automatic plate rotation for skewed plates
- \* Risk processor 32 bit
- \* DC servo power supply rated at 40 volts, 15 amp
- \* Encoder feed back for positioning
- \* Tack feed back for smooth contour part programming
- \* Motors, 50 volt sealed motor encoder and tack for reliable dust free operation
- \* All cabling shielded to NEE specification
- \* Remote safety stop switches and current limiting drives for safety
- \* Optically isolated servo axes inputs and outputs
- \* Machine control meets all requirements for European safety category No. 3
- \* 20 MPM traverse speed



**bornefeldt**

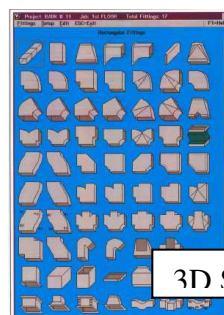
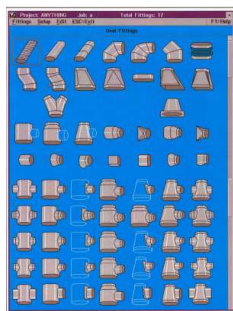
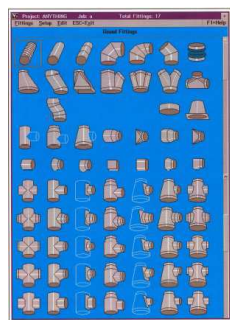
Hundigevej 79 2670 Greve

Tlf: 39272811 – Fax: 39276027

## SOFTWARE 5,9

The Lock former Vulcan VSII HVAC (Heating and Air Conditioning) software for Windows includes:

- Full rectangular, round, oval and nested (combination) fitting library.
- Each library shows the fittings as icons on the screen for easy mouse picking.
- Optional user defined fitting library containing the most frequently used fitting icons.
- The actual fitting input screen contains a 3-dimensional picture of the fitting. The fitting dimensions are typed into input fields on the picture itself. As soon as sufficient dimensional information has been input, a 3-D window view pops up to show the actual fitting.
- 3-view fitting preview. Each view can be rotated at any angle.
- Hole cutting program permitting graphic definition of to 8 holes on most rectangular fittings. The holes can be rectangular, round or flat oval and can be defined at any angle to the horizontal.
- Calculation and cutting of splitter vanes. Includes hole cutting for the forked rivets holding the splitter vanes. The definition of splitter vane radii and lengths is made in the shop data section of the program.
- Vulcan Parts Graphic program. Create and store shapes with this mouse supported program, which can store up to 10.000 individual shapes, which can be imported into the Vulcan fitting program for cutting. Includes DXF file import/export for interaction with CAD systems. Standard fitting blanks can also be modified in the graphic parts program.
- Background processing allows the computer operator to continue inputting new jobs, while calculation of previous jobs runs in the background.
- Purchased accessory take off during input. This permits the print out of accessory lists for each job. The accessories are picked from a user defined data file.

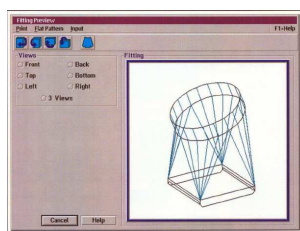


3D Stimulation



**bornefeldt**  
Hundigevej 79 2670 Greve  
Tlf: 39272811 – Fax: 39276027

- Shape Opt super optimisation program with optional manual graphic based, mouse supported override, permitting the user to drag or rotate blanks and to move them between the sheets in the job.
- Automatic segmenting of oversize blanks up to 10 times in each axis with optional manual override in mouse supported graphics program.
- Comprehensive "Shop Data" user defined database containing information about all seam and joint allowances with graphic presentation of it. The shop data section also includes all other production and program configuration data.
- Printing of self-adhesive labels in the cutting order to facilitate part blank identification.
- Full facility for printing out sheet and accessories lists for production and audit.
- Automatic generation of a DNC data file, which will be automatically transferred via a fibre optic cable to the cutting machine CNC Control. All manipulations in connection with the data transfer are controlled from the machine itself without interrupting the use of the programming computer. Simultaneously with the creation of the DNC file a list will be printed out with indication of all the sheets needed for the order, and also indication of the actual width and length, which are being used. This list can be used either for picking up the standard sheets in the stock, or as a cut list for a coil line.





**bornefeldt**

Hundigevej 79 2670 Greve  
Tlf: 39272811 – Fax: 39276027

**Machine Price for second hand Vulcan 2100C.....Euro 25.900,-**

**Price is ex stock Denmark**

**Terms of Payment:**

95% Down payment with the order  
5% 30 days after delivery

**Time of Delivery:**

2 weeks Ex stock DK-Copenhagen

**Installation and training is included in the price**

**Warranty:**

3 months from the date of delivery.

The NL 92 Conditions for sale of machinery and equipment are also part of the above quotation.

Kind Regards,  
Bornefeldt/Lockformer

(fil:tilbud\lockform\vul2100C-eng)